



Blood Storage and Transport Protocol:

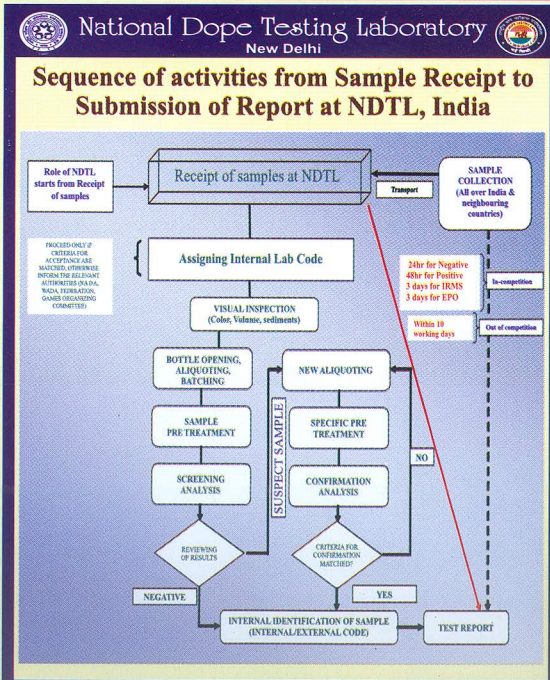
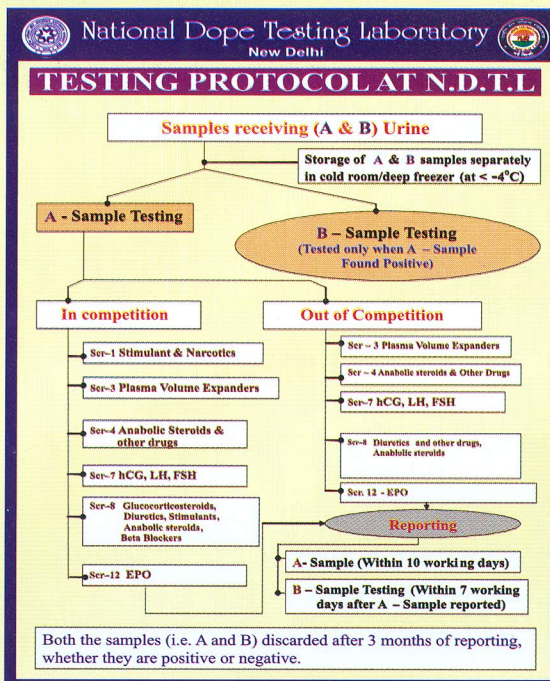
- The storage device shall be capable of maintaining blood Samples at a constant temperature between 2 to 12°C during storage
- A temperature data logger should be used to determine whether temperature conditions are met.
- In case of rapid delivery to the Laboratory (maximum 2 hours between Sample collection and arrival of the Sample at the Laboratory) Samples may be maintained between 2°C to 8°C during storage and transport



Who tests the sample?

Urine or Blood sample collected by the Doping Control Officer is sent to WADA accredited Doping Control Lab. The lab receives the sample with a code number and is not aware about the identity of the athlete.

Third Print : July, 2012



EDUCATION SERIES ON DOPING CONTROL - I

Introduction on Doping



NATIONAL DOPE TESTING LABORATORY
Ministry of Skill Development Entrepreneurship
Youth Affairs & Sports Govt. of India

J. L. N. Stadium Complex, East Gate,
Lodhi Road, New Delhi 110003, India.

Ph: - +91-11-24365530, 24368850, 24368536

Telefax:- +91-11-24365530, 24368850

Email:- ndtlindia@nic.in, ndtlindia@gmail.com,

Website: www.ndtlindia.com



What is doping?

Doping is defined as the occurrence of one or more of the anti-doping rule violations mentioned in the World Anti Doping Agency (WADA) code.

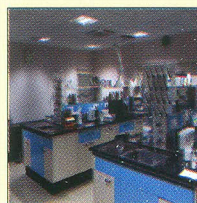


The Anti doping violations are:

- i) The presence of a Prohibited Substance in an Athlete's bodily specimen.
- ii) Use of a Prohibited Substance or a Prohibited Method.
- iii) Refusing to submit to Sample Collection after notification.
- iv) Violation of applicable requirements regarding Athlete availability for Out-of-Competition Testing.
- v) Tampering with any part of Doping Control.
- vi) Possession of Prohibited Substances and Methods.
- vii) Trafficking in any Prohibited Substance or Prohibited Method.
- viii) Administration of a Prohibited Substance or Prohibited Method to any Athlete or assisting, encouraging, aiding, abetting, covering up or any other type of complicity involving an anti-doping rule violation or any attempted violation.

What is Dope Testing?

Dope testing involves testing of urine or blood sample of athlete for the drugs /methods which are banned by WADA.



Who will be tested?

Any athlete who is participating in National / International competitions may be selected for testing.

How sample is collected?

Urine sample

1. Athlete who is selected for Dope Testing is given a notification.
2. Within one hour of getting notification, athlete is to report at Doping Control Station.
3. Athlete would be asked to select a Dope kit for giving urine sample.
4. Athlete has to provide at least 90 ml of sample under witness and divide urine sample into two bottles and carefully seal both bottles.
5. The certified Doping Control Officer will ensure that the Sample is valid for analysis (pH between 5 and 7, specific gravity equals to or greater than 1.010).
6. The Doping Control Form is to be signed by the athlete which states that all procedures were followed properly during the doping control.

7. After collection of dope sample and completing the documents, a copy of the Doping Control Form and the Notification Form is kept for record.

Blood Collection and Testing:

Blood Sample Collection Guideline (Published on 6th Oct., 2014 in Force : 1st January 2015 outlines recommended procedures for collection of blood samples in order to meet the analytical requirements of the Prohibited List and possible Blood Screening

| S. No. | | Equipment | Blood/ Serum |
|--------|---|----------------|-------------------------|
| 1. | CERA (Continuous Erythropoiesis Receptor Activator) | ELISA Reader | Plasma or Serum (A & B) |
| 2. | hGH(Human growth hormone) | Luminometer | Serum (A & B) |
| 3. | HBOCs (Haemoglobin-Based Oxygen Carriers) | LC-MS | Serum or plasma (A&B) |
| 4. | Homologous Blood transfusion | Flow Cytometer | Whole Blood (A&B) |
| 5. | Blood Parameters | Sysmex XTi | Whole Blood (A&B) |